

Vertical Turbine Specialists

VTS

Since 1955

**Listings for
Flanged Couplings**

FLANGED COUPLINGS



VTS

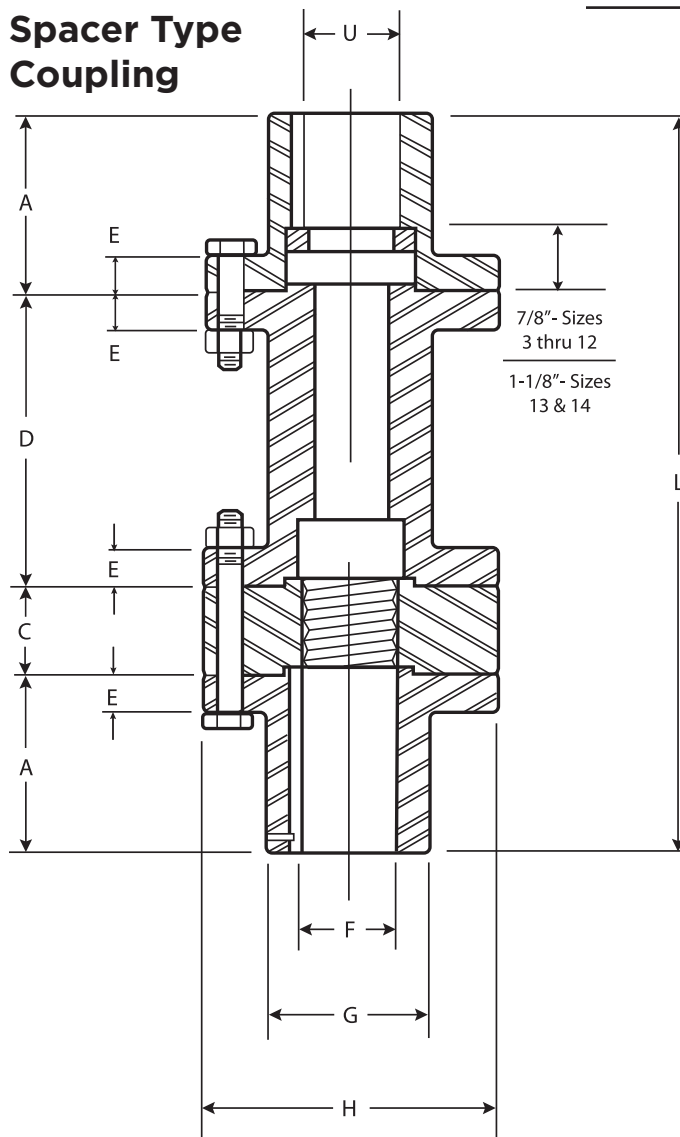
**VERTICAL TURBINE
SPECIALISTS**

VTS is a major Industrial Metal Fabricator and precision machine shop for the Vertical Turbine Pump OEM market. Providing a quality product in a timely manner. A complete turn-key operation that includes NDE testing and capability to apply industrial coatings to our fabricated products to meet our customer's specifications.

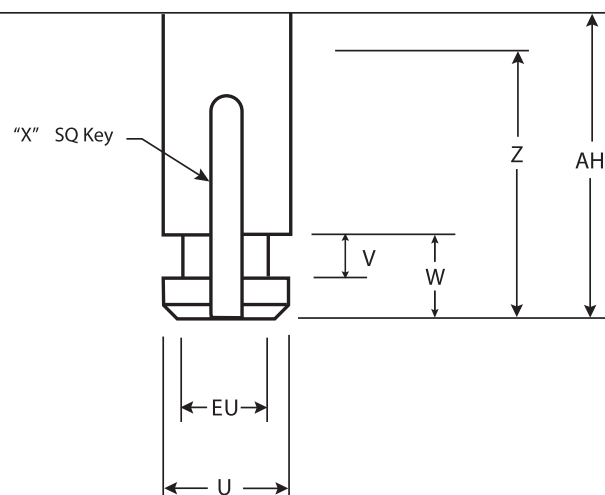
FLANGED COUPLINGS

DIMENSIONS

Spacer Type Coupling



Driver Shaft Extension

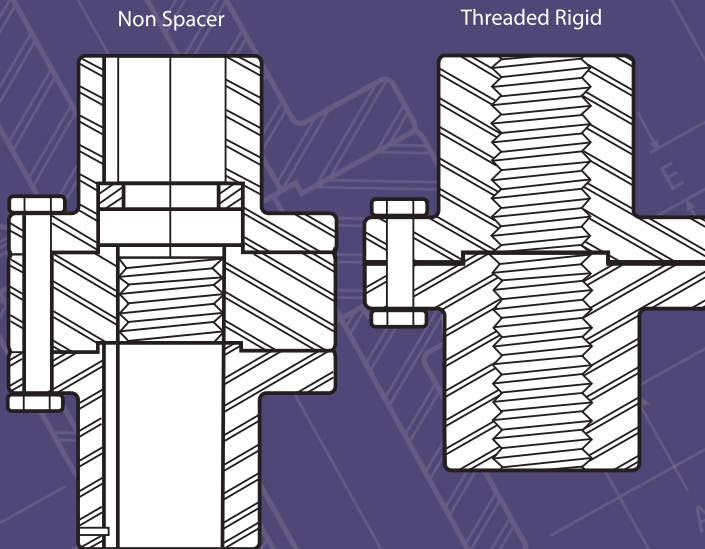


CPLG Size	AH	U	EU	V	W	X	Z
3	2-3/4	1-1/8	7/8	375	3/4	1/4	2-3/4
7	4-1/2	1-5/8	1-1/4	375	3/4	3/8	3-7/8
10	4-1/2	2-1/8	1-3/4	375	3/4	1/2	3-7/8
11	5	2-3/8	2	375	3/4	5/8	3-7/8
12	5	2-5/8	2-1/4	375	3/4	5/8	3-7/8
13	7	2-7/8	2-3/8	500	1	3/4	4-5/16
14	7-1/2	3-7/8	2-5/8	500	1	1	5-1/4
14A	7-1/2	3-1/8	2-5/8	1/2	1	3/4	5-1/4
15	10	4-1/4	3-11/16	1/2	1	1	3-7/8

CPLG Size	HP 1770 RPM	Thrust Lbs.	A	C	D	E	F		G	H	Capscrews		Length	
							Max.	Min.			No.	Size	Std.	Spacer
3	125	20,000	2	1-1/2	4-5/16	1/2	1-1/4	15/16	2-1/2	4-1/4	4	3/8	5-1/2	9-13/16
7	300	30,000	2-11/16	1-1/2	4-5/16	5/8	1-3/4	1-3/16	2-7/8	5	6	3/8	6-7/8	11-3/16
10	700	75,000	2-11/16	2-1/4	4-5/16	3/4	2-1/4	1-7/16	3-5/8	6	6	1/2	7-5/8	11-15/16
11	900	85,000	3	2-1/2	5-1/4	3/4	2-5/8	1-15/16	4-1/4	6-7/8	6	5/8	8-1/2	13-3/4
12	900	85,000	3	2-1/2	5-1/4	3/4	2-5/8	1-15/16	4-1/4	6-7/8	6	5/8	8-1/2	13-3/4
13	1100	90,000	3-7/16	3	5-1/4	7/8	2-7/8	2-1/8	4-7/8	8	8	5/8	9-7/8	15-1/8
14	1500	100,000	4-3/8	3-1/2	5-1/4	1	3-7/8	3	6-1/4	9-3/4	8	3/4	12-1/4	17-1/2
14A	1500	100,000	4-3/8	3-1/2	5-1/4	1	3-7/8	1-15/16	6-1/4	9-3/4	8	3/4	12-1/4	17-1/2
15	2500	200,000	5	4	5-1/4	1	4-1/4	1-15/16	6-3/4	10-3/8	10	7/8	14	19-1/4

*Note: Minimum dimensions required for coupling installation. - Check motor dimension.

All sizes are available as a ridged coupling or without a spacer.



All of our couplings have a factory applied Parkerized coating.

Parkerizing is an electrochemical method of protecting steel from corrosion and it also increases resistance to wear.

API Applications Available

Also available in other metallurgies

**Other sizes available –
Contact factory for available
larger motor shaft sizes and
HP ratings, or when sizing couplings
for RPM'S other than 1770.**



Vertical Turbine Specialists, Inc.

Tel: 806.743.5555 • Fax: 806.743.5559 • www.vtsfabs.com

1802 E. 50th St., Suite 106 • Lubbock, TX 79404

Follow us on

