



7/8" - Sizes
3 thru 12
1-1/8" - Sizes
13 & 14

Vertical Turbine Specialists

VTS

Since 1955

1-1/8" - Sizes
13 & 14

7/8" - Sizes
3 thru 12
1-1/8" - Sizes
13 & 14

Listings for Flanged Couplings

FLANGED COUPLINGS



VTS

**VERTICAL TURBINE
SPECIALISTS**

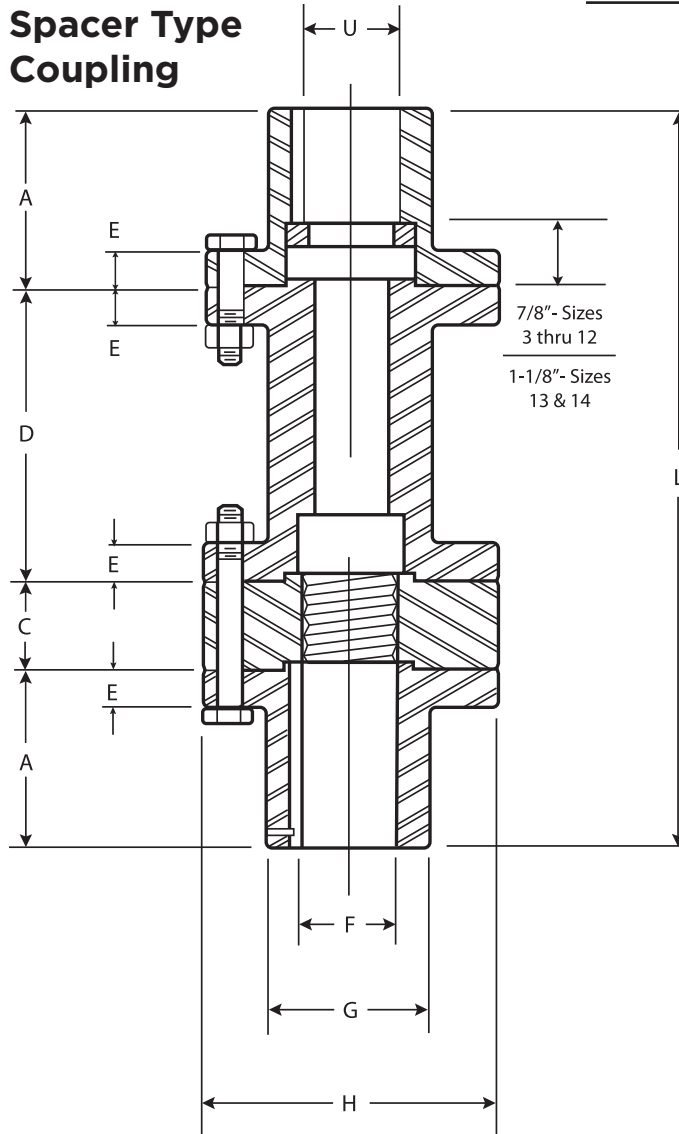


VTS is a major Industrial Metal Fabricator and precision machine shop for the Vertical Turbine Pump OEM market. Providing a quality product in a timely manner. A complete turn-key operation that includes NDE testing and capability to apply industrial coatings to our fabricated products to meet our customer's specifications.

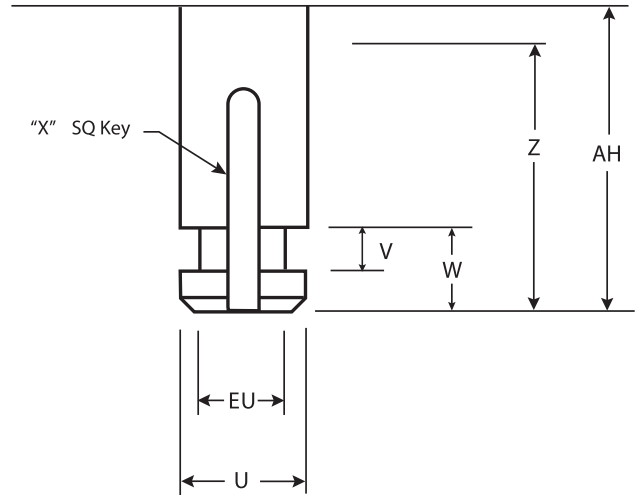
FLANGED COUPLINGS

DIMENSIONS

Spacer Type Coupling



Driver Shaft Extension

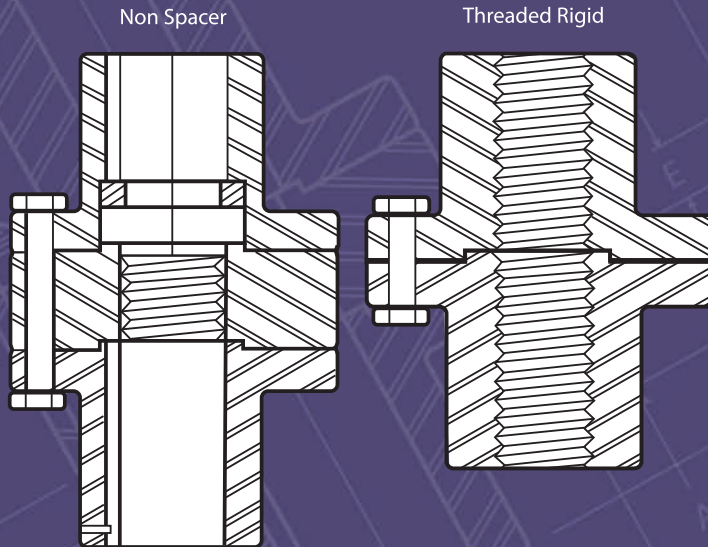


| CPLG Size | AH | U | EU | V | W | X | Z |
|-----------|-------|-------|---------|-----|-----|-----|--------|
| 3 | 2-3/4 | 1-1/8 | 7/8 | 375 | 3/4 | 1/4 | 2-3/4 |
| 7 | 4-1/2 | 1-5/8 | 1-1/4 | 375 | 3/4 | 3/8 | 3-7/8 |
| 10 | 4-1/2 | 2-1/8 | 1-3/4 | 375 | 3/4 | 1/2 | 3-7/8 |
| 11 | 5 | 2-3/8 | 2 | 375 | 3/4 | 5/8 | 3-7/8 |
| 12 | 5 | 2-5/8 | 2-1/4 | 375 | 3/4 | 5/8 | 3-7/8 |
| 13 | 7 | 2-7/8 | 2-3/8 | 500 | 1 | 3/4 | 4-5/16 |
| 14 | 7-1/2 | 3-7/8 | 2-5/8 | 500 | 1 | 1 | 5-1/4 |
| 14A | 7-1/2 | 3-1/8 | 2-5/8 | 1/2 | 1 | 3/4 | 5-1/4 |
| 15 | 10 | 4-1/4 | 3-11/16 | 1/2 | 1 | 1 | 3-7/8 |

| CPLG Size | HP 1770 RPM | Thrust Lbs. | A | C | D | E | F | | G | H | Capscrews | | Length | |
|-----------|-------------|-------------|---------|-------|--------|-----|-------|---------|-------|--------|-----------|------|--------|----------|
| | | | | | | | Max. | Min. | | | No. | Size | Std. | Spacer |
| 3 | 125 | 20,000 | 2 | 1-1/2 | 4-5/16 | 1/2 | 1-1/4 | 15/16 | 2-1/2 | 4-1/4 | 4 | 3/8 | 5-1/2 | 9-13/16 |
| 7 | 300 | 30,000 | 2-11/16 | 1-1/2 | 4-5/16 | 5/8 | 1-3/4 | 1-3/16 | 2-7/8 | 5 | 6 | 3/8 | 6-7/8 | 11-3/16 |
| 10 | 700 | 75,000 | 2-11/16 | 2-1/4 | 4-5/16 | 3/4 | 2-1/4 | 1-7/16 | 3-5/8 | 6 | 6 | 1/2 | 7-5/8 | 11-15/16 |
| 11 | 900 | 85,000 | 3 | 2-1/2 | 5-1/4 | 3/4 | 2-5/8 | 1-15/16 | 4-1/4 | 6-7/8 | 6 | 5/8 | 8-1/2 | 13-3/4 |
| 12 | 900 | 85,000 | 3 | 2-1/2 | 5-1/4 | 3/4 | 2-5/8 | 1-15/16 | 4-1/4 | 6-7/8 | 6 | 5/8 | 8-1/2 | 13-3/4 |
| 13 | 1100 | 90,000 | 3-7/16 | 3 | 5-1/4 | 7/8 | 2-7/8 | 2-1/8 | 4-7/8 | 8 | 8 | 5/8 | 9-7/8 | 15-1/8 |
| 14 | 1500 | 100,000 | 4-3/8 | 3-1/2 | 5-1/4 | 1 | 3-7/8 | 3 | 6-1/4 | 9-3/4 | 8 | 3/4 | 12-1/4 | 17-1/2 |
| 14A | 1500 | 100,000 | 4-3/8 | 3-1/2 | 5-1/4 | 1 | 3-7/8 | 1-15/16 | 6-1/4 | 9-3/4 | 8 | 3/4 | 12-1/4 | 17-1/2 |
| 15 | 2500 | 200,000 | 5 | 4 | 5-1/4 | 1 | 4-1/4 | 1-15/16 | 6-3/4 | 10-3/8 | 10 | 7/8 | 14 | 19-1/4 |

*Note: Minimum dimensions required for coupling installation. - Check motor dimension.

All sizes are available as a ridged coupling or without a spacer.



All of our couplings have a factory applied Parkerized coating.

Parkerizing is an electrochemical method of protecting steel from corrosion and it also increases resistance to wear.

API Applications Available

Also available in other metallurgies

Other sizes available -
Contact factory for available larger motor shaft sizes and HP ratings, or when sizing couplings for RPM'S other than 1770.



Vertical Turbine Specialists, Inc.

Tel: 806.743.5555 • Fax: 806.743.5559 • www.vtsfabs.com
1802 E. 50th St., Suite 106 • Lubbock, TX 79404

Follow us on

